



NRIC

National Reactor
Innovation Center

Land Use Siting at INL

Things to know and lessons learned

**Mary Scales, Strategic Space Management and Land Use Program Manager
Campus Development Office, Facilities & Site Services Organization**

June 23, 2025

MIS-25-85500



Setting the Site (pun intended)

Planning basics and what to know at INL

Strategic land use planning at INL

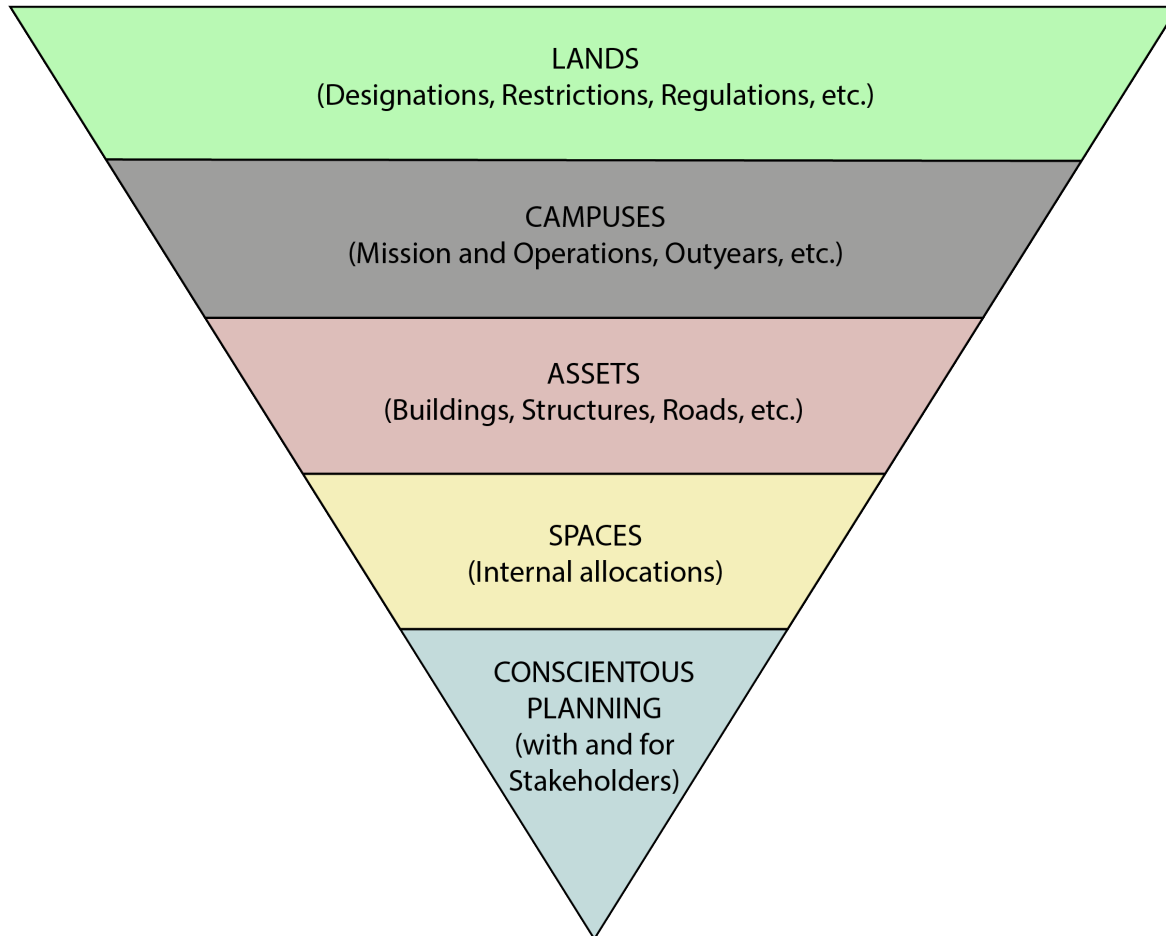
Conscientious decision-making and project-specifics

Working with DOE and BEA for siting

Things to know before we get started...

What's gone well, what lessons have we learned

Where do we begin?

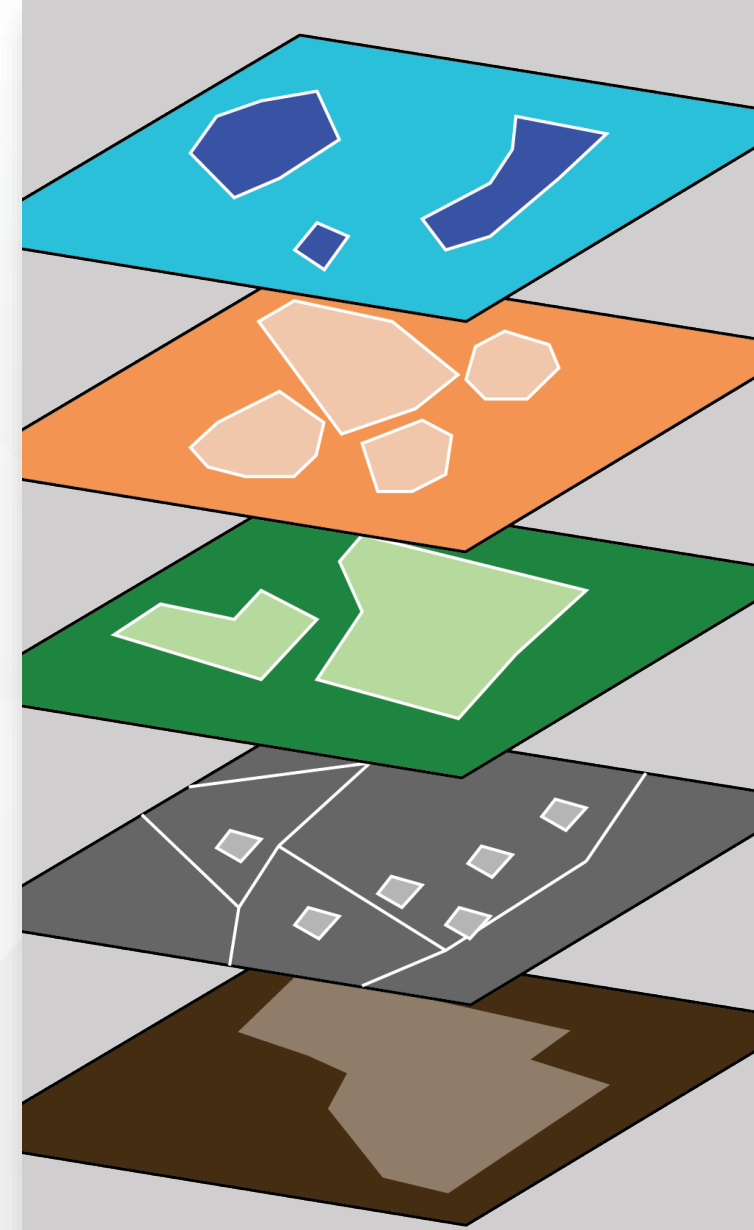


- INL's Campus Development Office is comprised of Land and Campus Planners, Real Estate and Real Property Specialists, and Space Planners
- Granularity is the key to understanding the interconnections and unique aspects of each specialty area
- Plans and Visions are the means for implementation (whether that is construction of new, relocation of existing, or demolition of assets)



It takes a village

- **Land Use Committee** (CTR-274) is an organizational body comprised of COOs and designated managers (Stakeholders in land use decisions)
- **Siting discussions** happen as part of sub-committees (includes primary resource stakeholders at INL and establishes long-term relationships)
- **Collaboration is key to success** with land planning – key stakeholders are engaged early (sometimes includes outside entities such as IEC, NRF, and others as required)





Building on Past Knowledge

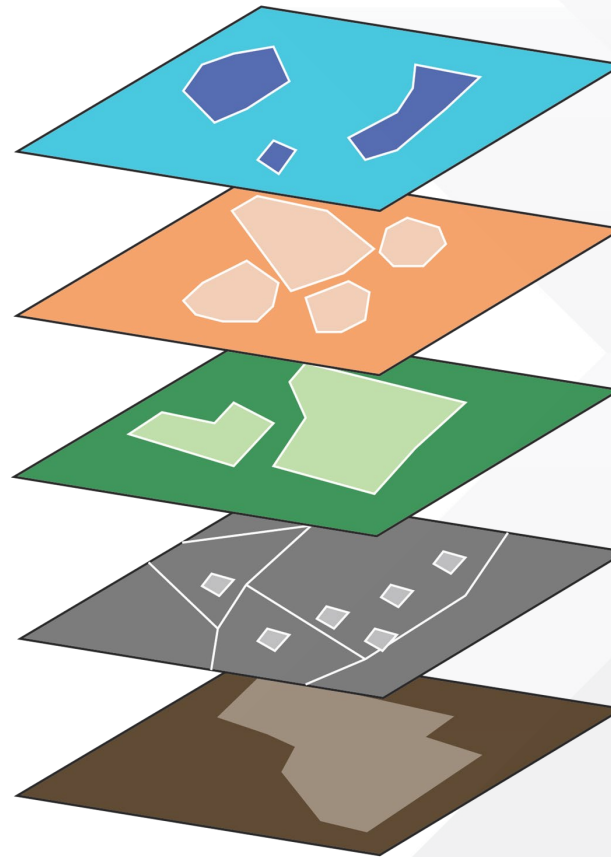
- Siting Studies, Plans, and Reports
 - Ad hoc Siting Studies
 - Comprehensive Land Use and Environmental Stewardship Report (CLUES)
 - PLN-1084 (Roads and Grounds Maintenance)
 - Environmental Assessments (EA) and Impact Statement (EIS)
 - Siting
- **‘What’ drives the ‘where’**
 - Land Use Intake Questionnaire
 - Routine and regular meetings and engagement with the industry partner to understand changing needs for site attributes

“...Be careful whose advice you buy, but be patient with those who supply it. Advice is a form of nostalgia: dispensing it is a way of fishing the past from the disposal, wiping it off, painting over the ugly parts, and recycling it for more than it’s worth...”

-Baz Luhrmann

So, you want to do work here – now what?

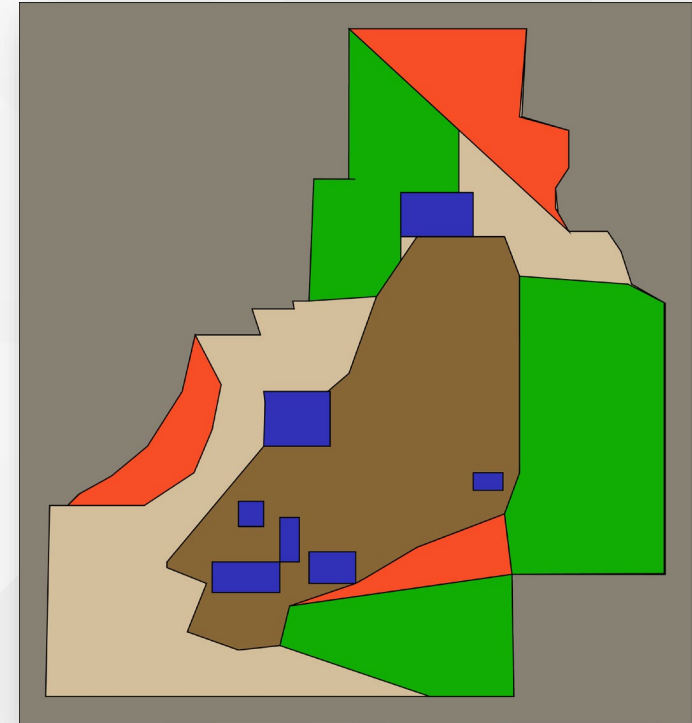
- **NRIC as an in-road to DOE** and an expression of interest (EOI)
- **Early engagement with the land use planning office** based on conceptual ideas and technologies
- **Remember, this is an active, growing laboratory** and not all areas of the laboratory are best-suited to your specific needs (this is an iterative process)



- **Stage 5** – Notional Sites Recommended to DOE
- **Stage 4** – INL/Industry Partner considerations
- **Stage 3** – INL Siting Group recommends areas
- **Stage 2** – Initial “where” evaluated by INL Land Use Planning based on “what”
- **Stage 1** – Early engagement and discussions of project

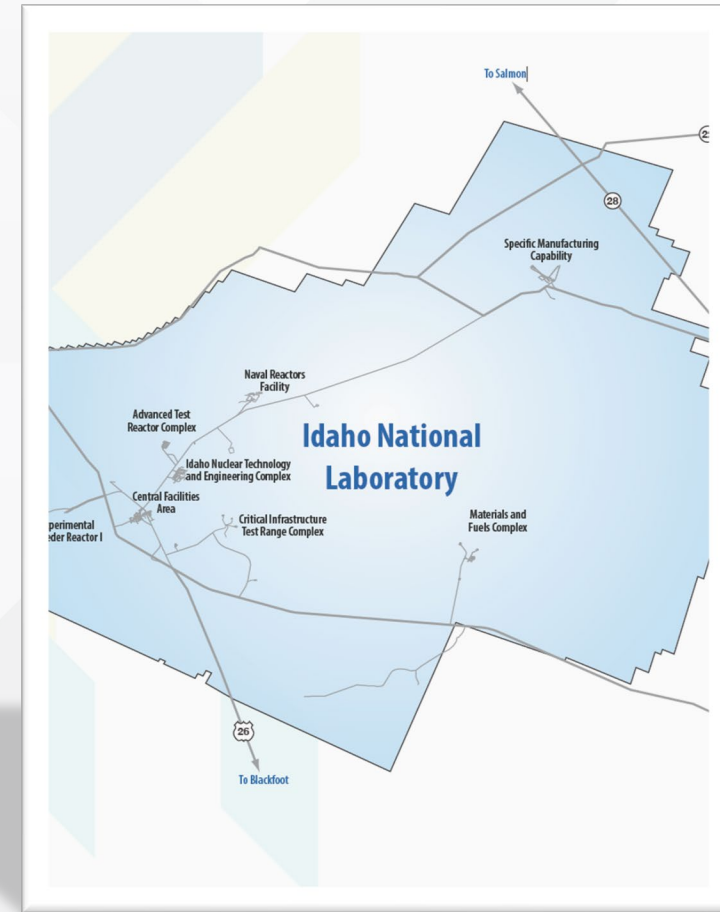
A few things to note

- Differences in DOE-Authorization and NRC-Licensed projects
- Proof of concept vs. Commercial Intent
- Utilities, Power Interconnection, and Other Logistics
- Potential encumbrances
- Real property agreement types (depends on your regulatory body)



“...Trust me on the sunscreen”

- There will be hiccups
- We won't have all the answers, but we will work to get them for you
- Timelines will shift, scope will change, and you will learn way more about some of us than you ever wanted to know
- 6 years of data and lessons learned
- Some things are **requirements**, some things are **recommendations**, and some things **we will learn together**.





Land Use Program Staff



Mary Scales

Space Management & Land Use
Program Manager

mary.scales@inl.gov

Campus Development Office
Facilities & Site Services



Reese Cook

Lead Land Use Planner

reese.cook@inl.gov

Campus Development Office
Facilities & Site Services



NRIC

National Reactor
Innovation Center

